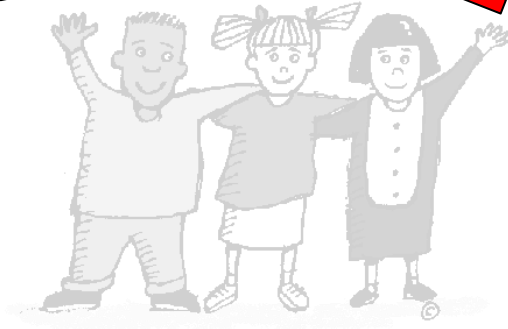
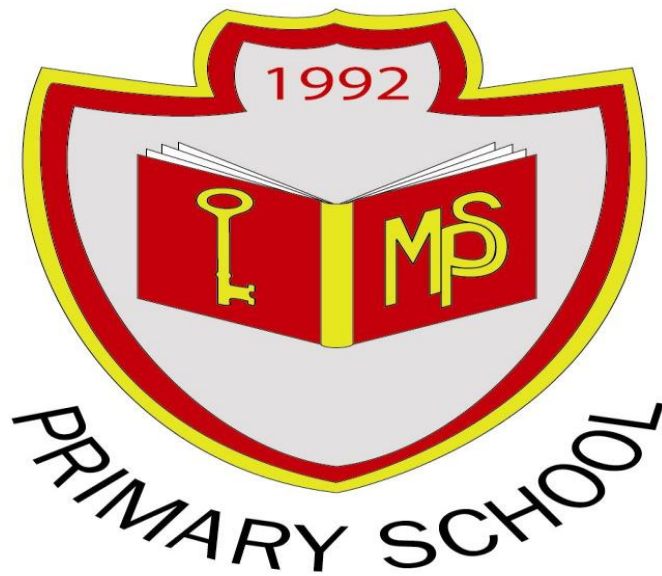


School Prospectus 2025-2026



MISKIN



This school exists for its pupils to enjoy today and prepare for their tomorrows.

OUR SCHOOL

Our school caters for children between the ages of 3 and 11. It was established in 1992 and serves the old parish community of Miskin in Mountain Ash.

Our purpose is education, interpreted in its truest sense from the old Latin Verb, 'educare' - to grow. Therefore it is our intent that all connected with the school receive a variety of opportunities to acquire knowledge, practise skills and develop talents to the best of their abilities: instilling a love of learning and no fear of failure.

Our Mission Statement reinforces this vision:

The school exists for its pupils to enjoy today and prepare for their tomorrows.

Our ethos is represented by the three Rs:

Respect Responsibility Reliability

Our badge reflects our belief that reading and the ability to use language is the key to learning:



Our aims are threefold and demanding:

1. To help pupils understand their strengths and weaknesses, to achieve the best they can dependent on their abilities and aptitude.
2. To help pupils understand their relationships with others, enabling them to fit securely into the society in which they will develop.
3. To stimulate pupils' curiosity about the world around them, building knowledge, skills and attitudes which allow them to explore it with purpose and enjoyment for the rest of their lives.

Our intention is, in partnership with parents and carers, to build a safe and stimulating environment with staff who are valued and who value their role in producing a child who is confident, communicative and caring.

We are pleased to have well established our link Mbale through our work with Pont. By working together, we will develop our global friendships and enable our children to become, ethical, informed citizens of the future.

We strive to be marvellous!

General Staffing Information

Address

Miskin Primary School
York Street
Miskin
Mountain Ash
CF45 3BG
01443 476426

Email-

admin@miskinprimary.rctcbc.cymru

website-

www.miskinprimary.com

Telephone number 01443476426

Headteacher

Mrs. Fran Davies

Chair of Governors

Mrs. Gary Oakey

Deputy Headteacher

Mrs K Kingston

Teaching staff

Mrs B Hounsom
Mrs. K. Kingston (KS2 LEADER)
Mrs. C. Richards (SENCO)

Lead Practitioner for Nursery

Mrs J. Pearce

Classroom Assistants/ 1:1

Miss A. Jayne
Ms. R. Prosser
Mrs. L. Campbell
Mrs A Gough (relief)
Ms. A. Simms (relief)

Caretaker

Mr. J Prosser

Family Liaison Officer

Mrs. Sam Stevens

Secretaries

**Mrs. C. Furlong
Mrs. J. Bowen**

Lunchtime supervisors

**Lynsey Kelly
Ainsley Simms
Linda Trick (relief)
Alison Gough (relief)**

Catering team

**Johnathan
Alex Courtney
Laura Pickford**

School term times 2025/2026

Term	From	To
Autumn 2025	Monday, September 1 2025	Friday, October 24 2025
Half Term	Monday, October 27 2025	Friday, October 31 2025
Autumn 2025	Monday, November 3 2025	Friday, December 19 2025
Christmas Holidays	Monday, December 22 2025	Friday, January 2 2026
Spring 2026	Monday, January 5 2026	Friday, February 13 2026
Half Term	Monday, February 16 2026	Friday, February 20 2026
Spring 2026	Monday, February 23 2026	Friday, March 27 2026
Easter Holidays	Monday, March 30 2026	Friday, April 10 2026
Summer 2026	Monday, April 13 2026	Friday, May 22 2026
Half Term	Monday, May 25 2026	Friday, May 29 2026
Summer 2026	Monday, June 1 2026	Monday, July 20 2026

Mon 1 Sept 2025 and *Monday 20 July 2026 will be designated INSET days for **all** LEA Maintained Schools. The remaining three INSET days to be taken will be at the discretion of each individual school following appropriate consultation with staff. ***It is intended that this INSET Day will either be taken on Mon 20 July 2026 or at an alternative time for example in the form of twilight sessions.**

All schools will be closed on **Monday 4th May 2026** for the May Day Bank Holiday.

Significant dates:

- Christmas - Thursday 25 December 2025
- Easter - Good Friday 3 April 2026
- Easter Monday - 6 April 2026
- May Bank Holidays
 - Monday 4 May 2026
 - Monday 25 May 2026

School term times 2026/2027

Term	From	To
Autumn 2026	Tuesday 1 September 2026	Friday 23 October 2026
Half Term	Monday 26 October 2026	Friday 30 October 2026
Autumn 2026	Monday 2 November 2026	Friday 18 December 2026
Christmas Holidays	Monday 21 December 2026	Friday 1 January 2027
Spring 2027	Monday 4 January 2027	Friday 5 February 2027
Half Term	Monday 8 February 2027	Friday 12 February 2027
Spring 2027	Monday 15 February 2027	Friday 19 March 2027
Easter Holidays	Monday 22 March 2027	Friday 2 April 2027
Summer 2027	Monday 5 April 2027	Friday 28 May 2027
Half Term	Monday 31 May 2027	Friday 4 June 2027
Summer 2027	Monday 7 June 2027	Tuesday 20 July 2027

Tuesday 1 Sept 2026 will be a designated INSET days for **all** LA Maintained Schools. The remaining INSET days to be taken will be at the discretion of each individual school following appropriate consultation with staff.

All schools will be closed on **Monday 3 May 2027** for the May Day Bank Holiday.

Significant dates:

- Christmas – Friday 25 December 2026
- Easter – Good Friday 26 March 2027
- Easter – Monday 29 March 2027
- May Bank Holidays
 - Monday 3 May 2027
 - Monday 31 May 2027

Class structures as Sept 25

Year Group	Class Name and Teacher	Number of Boys	Number of Girls	Total
6		11	7	18
5		5	5	10
	Mrs. K. Kingston Dosbarth Oaks			Total 28
4		5	3	8
3		8	5	13
2		5	3	8
	Mrs B Hounsom Dosbarth Rowan			Total 29
1		3	4	7
Reception		3	8	10
	Mrs C Richards Dosbarth Willow			Total 18
Nursery		4	5	9
Pre Nursery				
	Mrs J Pearce Dosbarth Acorns			Total 9
				Number on roll = 84 75 without N

Croeso/Welcome to our school.

I am very proud to be able to share with you the wonderful opportunities and developments at Miskin Primary School.

At Miskin we always strive to be 'Marvellous!'

Miskin Primary School is a vibrant school where children are enthusiastic and motivated to achieve endless possibilities. The children are at the heart of every decision we make to ensure that they are happy, confident and that the opportunities that are provided for them are relevant to their needs both now and in the future.

At Miskin Primary School we aim to provide a safe, happy and stimulating learning environment which enables each and every child to reach his/her full potential by:

- Working as a team comprising children, staff, parents, governors, outside agencies and visitors
 - Valuing the contribution of each individual within that team
- Providing a broad varied curriculum planned to suit the needs of the child
- Promoting and recognising justice, good standards of behaviour and discipline
- Showing and encouraging respect and tolerance for the school community as well as each other and understand the world at large
- Promoting equality of opportunity regardless of race, religion, gender, social background or ability
- Promoting links with other schools as well as the local and wider community

This school exists for its pupils to enjoy today and prepare for their tomorrows.

- Recognising needs and nurturing strengths promoting resilience and enterprise

We want our pupils to :

- be capable, healthy and confident, at ease with themselves and others
- become independent, self-disciplined, self-motivated and resilient
- have respect for themselves, each other and the environment
- be keen to learn and able to set, and achieve, realistic goals of a high standard as well as learn from failures
- be valued as an individual and as a supportive member of the community, both within the school and beyond by being ethically informed
- become literate, numerate, communicative, creative and co-operative
- develop a life long love of learning

Miskin Primary School knows that *happy children learn.*

We take the well-being of our pupils very seriously, we deliver support in all classes as well as providing additional sessions in our dedicated PERMA and Thrive areas of the school and our fully trained ELSA staff are here to support pupils whenever they need it. We have an Open Door policy for parents and carers and aim to support in any way we can, working together for the benefit of your child. We have been successfully reaccredited with our Investors in Families status. As well as a lockdown award.

We have a vibrant School Council as well as Digital Leaders and an active Eco Council who have received 4 Green Flags and are working on the platinum award. We have a gold standard tooth brushing award for all pupils and we are also Healthy Schools accredited.

We continue to evolve outdoor learning space for our pupils to enrich their learning, we have linked with the Arts Council of Wales as a Lead Creative School as well as the woodland trust. We have exciting and innovative spaces to maximise learning potential.

Through our engaging curriculum, we ensure that children can foster a passion for learning and curiosity that will help to develop high aspirations, creativity, resilience and a lifetime of memories. We believe in ensuring that children receive a well-rounded curriculum; where individual talents can be identified and nurtured to ensure that all children experience success and reach their full potential.

The school has a dedicated team that works hard to reach high standards in everything we do and this is further embedded through our successful relationships with parents/carers, the local community, organisations and the other schools we work with. We firmly believe that education is a partnership between home, school and community, we regard all being active partners in our pupil's education and value all interest and support.

Each Autumn and Spring term we have parents'/carers consultations where we will discuss your child's achievements and progress, in February you will receive an interim progress report with target areas for your child to develop and at the end of the Summer term we will send you a written report summing up the progress of the year. If, however, you wish to talk about concerns you have at any time, please don't hesitate to contact us.

I hope that this prospectus gives you as much information as possible about our school, the staff and the many activities that our children enjoy through our curriculum and our extra-curricular activities that we provide. Please visit our school website, check us out on facebook and twitter for more information on the school and what we are doing.

Please feel free to pop in and chat to us or give us a ring should you require any further information, Our team all look forward to meeting you.



Mrs. Fran Davies. Headteacher

The Curriculum

The curriculum is what we teach. We strive to help pupils get the most out of the process of growing and attempt to build on their natural curiosity and enthusiasm. We want each child to develop and achieve to the best of his/her ability and to derive satisfaction from his/her work at all times. In the Foundation Phase children learn through structured play, the environment providing many enriching experiences. In this environment the children learn language, phonics, early skills, mathematical concepts and social attitudes as well as gaining an understanding of the world around them.

This school delivers a broad curriculum which incorporates the principals of the New National Curriculum 2020. Through appropriate teaching and learning, activities, tasks and challenges we endeavour to ensure our pupils are; *ambitious, capable learners. Are enterprising, creative contributors. Healthy, confident individuals as well as ethical and informed citizens.*

We are working towards strive to make all learning appropriate, challenging and meaningful to our pupils. We want them to enjoy and value their learning experiences, reflect and apply their knowledge and prepare for their futures.

Please see our school website for ongoing curriculum updates.

Primary Science Quality (PSQM) Mark

We have been awarded this as a recognition of our commitment to excellence in Primary Science, we continue to enable our pupils to think and learn scientifically and extend our classrooms with outdoor learning.



Green Flag/Healthy Schools

The school has been awarded the Green Flag for the third time. This reflects the sustainable environment and our status as an eco-school. We have also achieved Phase 5 of Healthy Schools and are a Design to Smile toothbrushing school.



Investors in Families

The school has received reaccreditation from Investors in Families award in recognition for its outstanding commitment to, and partnership with our families and the community in which we live and learn. As well as achieving their Lockdown Award for all our efforts and support to families during this difficult time. We also have a very active Family Liaison officer, Sam who is always available to help and support as well as running training courses for adults.

We work closely with our local supermarkets and collect surplus foods to distribute to our families, so far we have collected the equivalent of 26,423 meals (Oct 2025)



Creative Schools

Our school has been successful in gaining Creative School status and linking with Arts Council for Wales to enrich our curriculum, we have taken this ethos into the design of our Curriculum for Wales offering a wide variety of experiences and learning for all our pupils.



Siater Iaeth

We actively encourage the use of the Welsh language in classes and around the school. We have achieved our Bronze Award and are actively working towards our silver.



Rights Respecting School

We work closely with our pupils and are further developing our curriculum working towards our silver award.

We work with organisations to raise career aspirations for our pupils and believe strongly in life long learning.



We are a Health School

We offer free fruit to all pupils daily, encourage health eating and lifestyles, we have water bottles on all our classes and run a variety of after school clubs nightly on half termly rotation.

We run ELSA and PERMA sessions to support our pupils wellbeing and mental health, we recognise the importance of building pupils resilience.





Foundation Phase pupils enjoying their daily milk time.



Pupils exploring and learning outdoors.

Our Objectives

We expect and support each child to:

1. Communicate clearly and confidently in speech and writing
2. Write legibly using good standards of spelling, syntax and punctuation
3. Read fluently and accurately with understanding
4. Listen attentively, justify and express their opinions clearly
5. Acquire and record information from a variety of sources
6. Use computational skills with speed and accuracy
7. Understand and apply mathematical skills and concepts in a variety of contexts
8. Understand and explain basic scientific ideas
9. Conduct investigations, interpret evidence and reach conclusions
10. Appreciate and confidently use a range of art, craft and technological skills
11. Use a computer effectively including to sort information, aid research and communication and write simple programmes in line with the Digital Competency Framework.
12. Have a geographical, historical and social awareness of the world and community they live in
13. Enjoy music, drama and movement and use it as a means of expression
14. Enjoy a range of physical activity, showing agility, perseverance and coordination
15. Have an awareness of world religions
16. Be self-disciplined and behave with consideration to others
17. Hold moral values and make moral judgements
18. Be resilient and learn from mistakes
19. Take risks and learn from failure
20. Develop a love of learning

Structure

The curriculum follows the structure of our school.

Years N-2 Foundation Phase

Years 3-6 Key Stage 2 - National Curriculum Key Stage 2

Foundation Phase includes seven broad themes:

- Personal and Social Development, Well-being and Cultural Diversity
- Language, Literacy and Communication skills
- Mathematical development
- Welsh Language development
- Knowledge and Understanding of the World
- Physical Development
- Creative Development

+

Religious Education



Pupils enjoy our Sports Yard, Play Yard and Quiet Yard as well as our Wellbeing Shed and our wild field.

Religious Education

Miskin Primary is non-denominational and provides a caring environment for children from all kinds of backgrounds.

Religious Education is a statutory requirement and is taught in accordance with the Local Authority's Agreed Syllabus. An awareness and understanding of Christian teaching has a direct bearing on the attitude and behaviour of all involved in the work of the school. Whilst emphasis is given to the study of Christianity attention is given to the significance of other faiths. The programme is related to the nature, experience and needs of the children and respect is given to young children's natural ways of understanding their world and seeking for meaning. School Assemblies are held on a daily basis.

This school exists for its pupils to enjoy today and prepare for their tomorrows.

Parents may exercise their right to withdraw their children from religious worship or religious education if they so wish on application to the Governing Body.

Assemblies

Our assemblies are broadly Christian in nature, with the inclusion of stories and customs for other world religions, with a focus on personal and social issues, Welsh heritage and language and our school values that are set half termly. Assemblies helps to encourage tolerance and respect in all our pupils. We hold school assemblies daily. There is a Celebration Assembly held every Friday, during which pupil's achievements both in and out of school are shared and celebrated. Parents who wish their children to be excluded should contact the head teacher in person.

Events: We have a list of events which includes:-

Harvest Festival	Educational Visits
Christmas Concerts	Theatre Visits
Class Assemblies	Summer Events
St David's Day	Activity Courses
Sports Day	Sporting Fixtures
Parent Evenings	Social/Fundraising Events

If your child is involved in anything that is likely to extend beyond the normal school day, you will be notified and your permission sought.

Curriculum Arrangement for Special Education

All pupils are entitled to access the full range of National Curriculum subjects. We adhere to the Code of Practice, ALN Bill and all subsequent reviews.

There may be times when children need extra support to complete tasks prescribed. Some pupils require differentiated work either as a support or as an extension. In such cases, class teachers adapt the materials they use in order that all pupils gain maximum benefit.

Other pupils may require adaptations to meet their physical needs. In such cases work is planned in advance to allow for adaptation. All pupils have the opportunity to take part in field studies. Where pupils need further support the class teacher consults with the Additional Learning Needs Coordinator (ALNCO) in the school and an Individual Education Plan (IEP) is produced if necessary.

Equal Opportunity

The school has an Equal Opportunities policy.

This school seeks to promote equality of opportunity through its curriculum so that the children are not denied on grounds of gender, race or disability.

We believe that all pupils are of equal worth and we place equal value on the abilities, talents and skills of every individual in our charge.

Unfortunately we do not have easy access for wheel chair users. This is due to the many steps around the school. Modifications/adjustments would have to be made to accommodate a wheel chair.

If you require written materials in different formats or you have special requirements for visits and events, please contact the school. We will do our best to facilitate this.

Our uniform is not gender specific.

Sex Education

The school's policy on sex education is based on the LA's policy document. There is not a specific timetable allocated for sex education, rather it is included as part of the PSE programme we deliver via Jigsaw scheme of work.

The School Nurse, or other qualified visitors give talks to older Key Stage 2 children but the majority of work in this area is covered by staff.

The programme of sex education is part of the school's curriculum and participation of pupils is as much a requirement for this as for other areas of the curriculum.

Use of Welsh Language

The medium of instruction is English. Welsh is taught as a second language aiming mainly at oral fluency and social use in school. It is taught in line with Welsh Government and LA policy. This is a study of our 'Welshness'. Children are made aware of our heritage, culture and language and to be proud of our national 'uniqueness' which is incorporated into our teaching at every possible opportunity to promote the use of the Welsh language. We have a very active Ciriw Cymraeg! As well as Helpwr Heddiw throughout the school. We also work with the Urdd to help support our pupil's language development. We have been accredited with the Siarter Iaith Bronze Award.

Physical Education/Sport

Physical Education is about developing children's enjoyment, confidence and skill in physical activity and introducing them to the pleasure of sport. The programme for physical education involves practical activity which gives all children, irrespective of age or gender, opportunities for participation, enjoyment and success. Our school aims to promote an enjoyment in undertaking exercise in all children, that will hopefully be continued in later years as a part of a healthy lifestyle. The activities include games, gymnastics, dance, athletics, outdoor and adventurous activities and swimming, all of which are general requirements for physical education in the National Curriculum. Inter school sporting activities are arranged in netball, rugby etc. Physical development and a healthy lifestyle are both areas promoted by the School. We encourage two hours a week in-school provision and

provides a link with sporting opportunities in the community. We are also part of the Healthy Schools programme. Our older pupils have 10 swimming sessions per academic year at Abercynon Sports Centre. Sessions are instructed by sports staff. This is part of the curriculum and must be attended. All abilities are catered for. Children are required to dress in appropriate clothing in relation to the activity being undertaken- the wearing of jewellery is not permitted.



We learn from visits and visitors.

Charging and remissions policy

The school recognises the valuable contribution made to our children's education by the provision of 'out of classroom' experiences and activities.

The school charging and remission policy is based on the LA model which has been accepted by the Governing Body

Under section 110 of the 1988 Education Act, the Governing Body, having adopted the LA policy, has determined that parents be invited to make a voluntary contribution to support a particular activity, i.e. educational visits. Unfortunately, visits cannot always be funded from the school budget and as such we ask parents for a voluntary contribution equivalent to the 'cost' of the visit inline with the Charging policy.

Homework

We believe that homework has a role to play in the partnership of pupil, home and school. It begins in Nursery with pupils being given home tasks to complete and is built on throughout the school to Year 6 being given a variety of language, reading, maths and craft tasks.

The homework is reasonable and linked to work completed in class. It is given on the same day each week (Monday) in order that parents are aware of what is expected and returned to school on Friday. As pupils progress through the school there is an increase in the amount of online home learning set. Pupils that fail to hand in homework on a regular basis are referred to the Headteacher who will then, if necessary, discuss the matter with parents.

**Please note that if you have any concerns regarding the curriculum arrangements you are welcome to discuss them with the Headteacher.*

Reporting

We hold parent's evenings twice yearly. The first is in the autumn term to discuss how your child has settled. The second is in the spring term to discuss your child's progress prior to the summer term's written report. Full written reports are sent home at the end of the summer term.

** Please note we are an 'open door' school. If you have any concerns during the year you are asked to contact the Headteacher who is always available to discuss matters. Do not leave a problem grow!*



Outdoor and adventurous residential visit, activities and enhancing our environment with tree planting and outdoor learning.

Parent-Teacher Association

There is an active Friends of Miskin Primary School running within the school. They raise funds for the school through variety of social and school-based events. All parents of pupils within the school are automatically members, please pop along to the next meeting, make new friends and find out how you can support the school and how we can support you. Your help and support would be appreciated.

Our Family Liaison Officer Sam is available to chat with parents on the yard in the mornings or you can give her a ring, she is happy to help or direct you to someone who can. We can also provide fuel vouchers and foodbank tokens,

Pastoral Care Arrangements

All members of staff are involved in the care and welfare of pupils with the Headteacher having overall responsibility.

Parents will be informed is a pupil is taken ill or has a minor accident which means that he/she cannot remain in school. In the case of a major accident, emergency services will be called and parents contacted.

Medical and dental services attend school on a regular basis. Parents are informed of the checks being carried out at those times. We are a gold awarded tooth brushing school.

The Attendance Welfare Officer will be involved where a pupil's attendance is giving cause for concern and our Family Liaison Officer is here to help and support you too.

At least two members of staff are on duty on our yard to supervise children at all break times.

Termly Fire drills are carried out. We also conduct reverse evacuations, pupils call this 'the elephant on the yard.'

Access to the school building is via the main entrance which is covered by CCTV, all the yard gates are locked for security during the school day and the main door and Foundation Phase door are fob activated only.

Children may only leave the school early if collected by a responsible adult. We expect pupils to be collected by the same adult who drops them off unless we are informed otherwise. All Foundation Phase pupils are dismissed to an adult at the end of the school day. KS2 pupils make their own way to and from school.

All staff have been CRB/DBS checked.

School Discipline/ Behaviour

The school aims to promote and encourage self discipline, good personal behaviour and a respectful attitude towards others.

The school operates a positive approach to behaviour management where pupils take responsibility for their own actions. Good behaviour is highlighted and rewarded at every opportunity.

Sometimes the procedures are not wholly successful and in those instances certain sanctions may be used by the teacher or Head Teacher, for example:-

1. We always speak calmly and discuss with pupils what has happened in order to support them.
2. Reprimand if needed.
3. Change of seat or group.
4. Repeat of work.
5. Temporary withdrawal from class. (working with additional practitioner)
6. Additional work.
7. Referral to Deputy Headteacher / Head Teacher.
8. Removal of breaktime.
9. Referral to parents.
10. Behaviour book sent home and returned daily.
11. Removal of privileges (e.g. excluded from attending a visit).
12. Exclusion from school as a last resort.

On occasion the Head Teacher may contact the parents/carers about a child's persistently bad behaviour and suggest, with the approval and co-operation of parents/carers, that a behaviour modification programme be put in place. If

necessary, this would be provided by a school support service. Sanctions for lack of progress can be discussed with the parents. The Head Teacher has a right to exclude a pupil from school in extreme or persistent cases of bad behaviour. When this is done:-

- a. The parents/carers will be told that their child is excluded and will be given the reasons verbally and in letter format.
- b. The parents/carers will be told that they have the right to take the matter up with the Governing Body of the school and the Local Education Authority. In the case of a permanent exclusion from the school, there is a formal right of appeal, the arrangements for which must be made by the Local Authority.

Complaints Procedure

If you have any concerns about your child's education you should, in the first instance, make an appointment to discuss this with the Headteacher. If you feel that your complaint has not been resolved you may wish to contact:

The Chair of Governors (details on cover page)

The School Complaint Policy can be found on the school website.

If the problem is still unresolved you should inform the Director of Education in writing and once again an attempt will be made to resolve the problem. If your complaint is still not resolved and it relates to the curriculum or to Religious Education you may have recourse to the official Complaints procedure under the 1988 Education Reform Act.

Access to Information

Parents/carers are reminded that access to school documentation is available at any reasonable time following a request. Please contact the school if further information is required regarding this brochure.

School's policies are available for parents/carers to view on request from the Headteacher. Any parent/carer wishing to have a copy of a particular policy may make a request to the Headteacher but we would request that photocopying costs are met.

Please note that school information can also be accessed on our school website.

School Organisation

The pupils are organised into classes of mixed year groups. In the main the maximum age span is two years. Teachers will have responsibilities for areas of the curriculum and children will have opportunities to be taught by staff other than their class teacher. Children may be admitted full time, nursery education the day after they attain their third birthday (pre nursery).

Lower school	pupils who are 4 during the year	Nursery
	Pupils who are 5 during the year	Reception
Middle school	Pupils who are 6 during the year	Year 1
	Pupils who are 7 during the year	Year 2
Upper School	Pupils who are 8 during the year	Year 3
	Pupils who are 9 during the year	Year 4
	Pupils who are 10 during the year	Year 5
	Pupils who are 11 during the year	Year 6

Admission

The school follows the LA's Admission Policy/Procedures as outlined in the Starting School booklet. Parents wishing their child to start school should contact the Headteacher. Children are admitted to the nursery as soon as possible after their third birthday. New pupils (at whatever age) and their parents will be invited to the school prior to admission to view and discuss in line with our partnership ethos. If you are thinking of sending your child to our school please feel free to arrange a walk around and chat with the Headteacher.

Parents will need to complete a **LOCAL AUTHORITY** admission form prior to starting and may need to resubmit forms as children move through the school. We have a home-school agreement which we ask parents to discuss with their child before both parent and child sign. This is to be found at the end of the prospectus for your information.

During the year, opportunities are provided for parents to visit the school to see their child's work and discuss progress with the class teacher. Occasionally meetings are arranged where teaching staff or advisory teachers report on a particular aspect of the school curriculum.

Registration

Pupils must be registered by the name that appears on his/her birth certificate. Any request to change the name must be accompanied by legal documentation.

Contact Details

It is essential that we are able to contact you immediately should the need arise! We therefore request your telephone number and at least one alternative contact (preferably two). Please inform us promptly of any change to these contact details. We use a Texting service to update parents/carers as well as posting information on the school Twitter and Facebook sites. We also have a school website.

Blwyddyn 6 are visiting the NDEC/ I hales building today to learn about careers in cyber security. Thank you to Lynda from @firstcampus for organising. #dosbarthoaks #ambitiouscapablelearners #digitalforensics



Science investigations and classification work.

Transition

Transition from home to school and within the school is made as smooth as possible in order to ensure that all parties are kept informed and have as much information about each child as possible so that their progress is unhindered; they feel secure and are settled.

We are fortunate to have very strong links with Mountain Ash Comprehensive School (MACS) and all staff work hard to ensure a smooth transition for pupils moving from Primary to Secondary Education.

We aim to ensure that:

1. Children are well prepared for transfer and feel secure about entry into Secondary Education
2. That curriculum continuity and children's educational progress are both maintained
3. That parents/carers are informed and consulted with about transfer arrangements

Absences

If your child is either late or absent from school, please contact the school by phone on that morning or written note prior to absence/lateness explaining the reason. If no explanation is given the absence will be recorded as unauthorised and may result in a referral to the Attendance Welfare Officer (AWO). We encourage pupil's attendance to be 95+% by awarding certificates on a termly basis. Individual attendance certificates and letters are given termly and class attendance is celebrated weekly. Figures for the school's attendance and unauthorised absences are published in the Annual Report to Parents.

To comply with The Education (Penalty Notices) (Wales) Regulations 2013, the school will operate in accordance with the local authority's Code of Conduct for

fixed penalty notices for regular non-attendance at school. It remains the discretion of the head teacher to authorise absences in line with The Education (Pupil Registration) (Wales) Regulations 2010 attendance codes and supplementary guidance provided by the local authority.

Pupil Welfare

Please note that school is legally obliged to record any concerns for our pupil's welfare and to make referrals, when necessary, to appropriate agencies following guidelines laid down by the LA. Such matters are always dealt with confidentially.

Meals

Children are supervised during the dinner hour by Lunchtime Supervisors. Meals are prepared on the premises. There is a fortnightly menu rota and a daily choice of food. Nursery children have a choice of hot vegetarian or non-vegetarian meals daily and are supported and encouraged to eat together. Facilities are available for children to bring a healthy packed lunch but please note: no cans or glass bottles. Meals are provided to all pupils from Nursery up free by the Welsh Assembly Government.

Application forms for 'free meals' are available at the school. Please contact the secretary for any further information on eligibility, as this may entitle you to access additional grant funding.



All our meals are cooked on site, we have fantastic cooks!

Clubs

Sports/craft/drama/book/ cooking/lego/ICT etc. Our clubs are varied and held on different days of the week throughout the school year and change half termly. As they are after school, both parental permission and arrangements for getting home safely are needed.



Keeping active and having fun is important to us all.

Structure

Your child will progress through two broad stages of schooling.

Foundation Phase	Nursery/Reception/Years 1&2
Key Stage 2	Years 3/4/5/6

Classes

These are arranged dependent upon the number of staff and the number of children. We organise classes to place children within their year group and stage of development wherever possible. When this is not possible we place a child in the class most appropriate for their needs according to age.

Please note that there will be occasions when your child will be taught by a supply or temporary contract teacher, e.g. sickness, training, etc. At such times every effort is made to keep the class running smoothly and maintain our very high standards of learning and behaviour.

Teaching Hours

	Nursery	Rec - Y2	Y3 - 6
Morning Session	9.00 - 11.50	9.00 - 12.00	9.00 - 12.15
Afternoon Session	1.00-3.15	1.00 - 3.15	1.00 - 3.15

**Please make sure that your child arrives in school promptly as lateness is disruptive.*

** please make sure that Foundation Phase children are brought to school by an adult and met by the same adult at the end of the school day or advise staff otherwise.*

**Breakfast Club is available for all pupils arriving between 8.10a.m - 8.30am.*

**Please ensure that all KS2 children understand home-time arrangements and club attendance.*



We promote a love of reading with visits to our local Library

3Rs

All who attend our school are members of a community and need to behave in such a way that ensures the health, safety and happiness of all. We ask that you and your child follow the three Rs:

Respect

Responsibility

Reliability

This will help ensure that:

- ❖ All pupils are punctual
- ❖ All Foundation Phase pupils are met at the end of the school day by an adult
- ❖ Any pupil that leaves the school during the day is collected by a specified adult
- ❖ All items of clothing are marked with the child's name
- ❖ Pupils with long hair wear it tied back
- ❖ Jewellery is not worn (it can be dangerous in certain situations and causes distress when items are lost) stud earrings only are permitted but must be removed for PE sessions.
- ❖ Sweets, chewing gum and dangerous items are not brought to school

Uniform

We are pleased that **all** our children wear school uniform.

Red - jumpers, sweatshirts, cardigans, polo shirts

White - shirts, polo shirts, blouses

Grey/Black - trousers, skirts

All pupils are expected to wear practical footwear for playing and running in. Flipflop type shoes are not acceptable.

In warm weather red/white dresses or red/white polo shirts with grey/black shorts may be worn. For P.E. an appropriate change of clothing is needed, e.g. white tops and black shorts.

Uniform (with optional school badge) can be purchased from local stores .

The School Council also runs a uniform exchange store. Please feel free to donate surplus uniform and exchange for a small donation to the School Council.

Please make sure clothing has the pupil's name on it, especially jumpers!

Please donate any uniform that your child has grown out of, we will reallocate it.

Medical

We must be informed of any medical condition that could affect your child in school. We can administer some prescribed medication in accordance with our school Medication Policy. You are welcome to come and administer your child's medication yourself and we are happy to store medication safely.

Pupils with allergies need to have LA catering forms completed to access bespoke menu, we can support you with this.

Conclusion

This is our school.

We are very proud of our pupil's achievements and also of our school's.

We want you to be proud that your child is a pupil at this school. Together we will work to give your child the opportunity to progress and develop to his/her full potential.

We want your child to come to school happy, work hard, play well and go home happy.

This is Miskin, come and join us!



Please complete and return to school



**Consent form for photography/filming/digital media.
Please sign and return.**

I consent to Miskin Primary School using photographs and/or video recordings including images of my child both internally and externally to promote the work of School. These images could be used in print and digital media formats including print publications, websites, e-marketing, posters banners, advertising, film, social media, teaching and research purposes. We do not name pupils in any public facing formats.

I understand that images on websites can be viewed throughout the world and not just in the United Kingdom and that some overseas countries may not provide the same level of protection to the rights of individuals as EU/UK legislation provides.

I understand that some images or recordings may be kept permanently once they are published and be kept as an archive of School life.

I have read and understand the conditions and consent to the images being used as described.

Pupil Name	
Parent/Carer Print Name	
Parent/Carer Signature	
Date	

The school is committed to processing information in accordance with the General Data Protection Regulation (GDPR). The personal data collected on this form will be held securely and will only be used for administrative purposes.

Your rights

You have the right to request to see a copy of the information we hold about you and to request corrections or deletions of the information that is no longer required. You can ask the School to stop using your images at any time, in which case it will not be used in future publications but may continue to appear in publications already in circulation.

You have the right to lodge a complaint against the school regarding data protection issues with the Information Commissioner's Office (<https://ico.org.uk/concerns/>).

This school exists for its pupils to enjoy today and prepare for their tomorrows.

Please complete and return to school



Name of pupil: _____

Permission Letter. Please sign and return.

This letter covers several aspects of our curriculum and ways to share and celebrate your child's learning and successes. It will help us to maintain your child's health and wellbeing as well as giving us permission to include them in every aspect of school life. We would be grateful if you could read the following information, sign each section and return the completed form to the school office. You must inform us if circumstances change; otherwise this permission lasts for the time your child is with us here in Miskin Primary

Local Visits

As part of their learning the children may visit the Mountain Ash area with staff (within walking distance of the school). This may include visiting the local amenities. In line with RCT guidelines, risk assessments are completed for all off site activities. (Permission for visits that require bus transport will be dealt with separately).

I give permission for my child to take part in local visits.

Signed _____

Local Sports events KS2

(KS2 only) Pupils may have the opportunity to take part in sporting competitions in KS2 such as '5 a side' football, rugby etc. We rely on parental lifts for the players. All parents must have upto date car insurance and all pupils wear a seatbelt.

I give permission for my child to be transported by an insured parent in their car.

Signed _____

Food Technology

We may give the children opportunities to taste/cook food or drink as part of a particular topic.

I give permission for my child to take part in the cooking and tasting of food/drink.

Signed _____

Fruit

As part of our school initiative all children have access to a piece of fruit daily for £1 a week. Occasionally we have fruit tasting sessions as part of class topics.

I give permission for my child to eat fruit/vegetables when offered.

Signed _____

Other Allergies / medications needed

Please list any additional allergies or intolerances that your child may have, we will need to contact you further on this. These may include: animal hair, materials, plants, hay fever, asthma puffers. etc

Signed _____

School lunch service- any food allergy information and supporting evidence will need to be itemised on RCT catering online by parent/carer. Please see school office for further information.